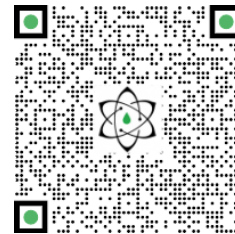




TECHNICAL REPORT

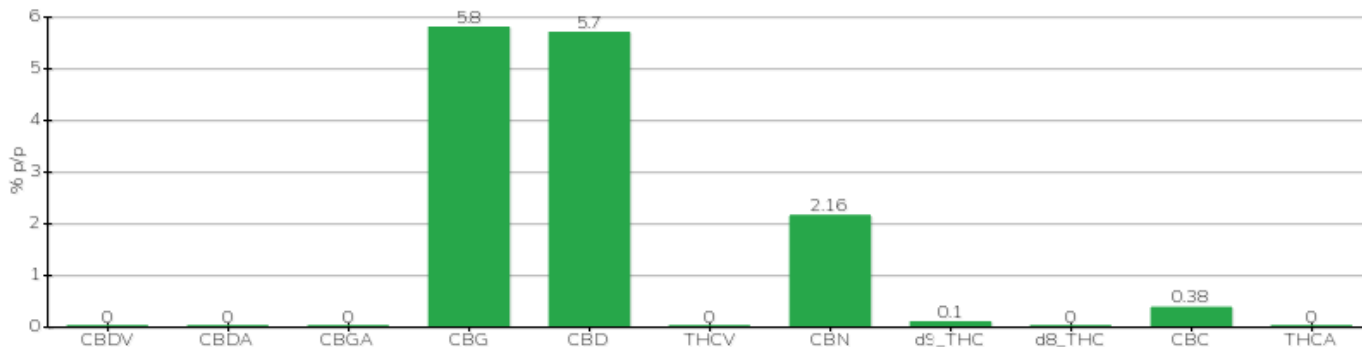


Committente	Valtellina Med	Etichetta	L0123298
Data accettazione	27/10/2023	Tipologia campione	semilavorato
Data analisi	30/10/2023	varietà	NA
Codice riferimento interno	CRY2710.A.1	N. Cartellino	NA
Metodica analitica	HPLC - HS - Rev.2	Campionamento	a cura del cliente
Lotto			

Note

Parametro	% p/p	Metodo
CBDV	<0.01%	HPLC-UV
CBDA	<0.01%	HPLC-UV
CBGA	<0.01%	HPLC-UV
CBG	5.80%	HPLC-UV
CBD	5.70%	HPLC-UV
THCV	<0.01%	HPLC-UV
CBN	2.16%	HPLC-UV
d9_THC	0.10%	HPLC-UV
d8_THC	<0.01%	HPLC-UV
CBC	0.38%	HPLC-UV
THCA	<0.01%	HPLC-UV
CBD TOTALE	5.70%	CALCOLATO
CBG TOTALE	5.80%	CALCOLATO
THC TOTALE	0.10%	CALCOLATO

CAMPIONE ANALIZZATO: L0123298(3.00gr)



Pineto 30/10/2023