

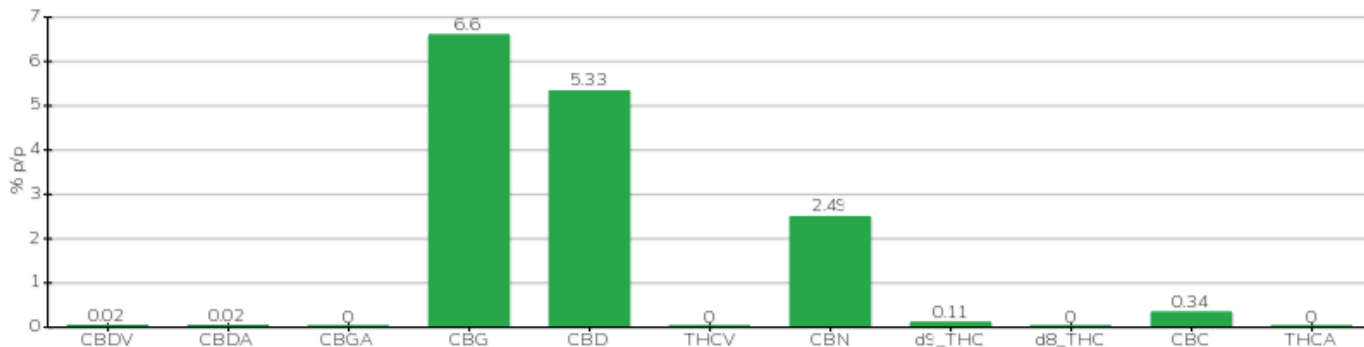
TECHNICAL REPORT

| | | | |
|-----------------------------------|-------------------|---------------------------|--------------------|
| Committente | VALTELLINAMED | Etichetta | L0124032 |
| Data accettazione | 05/02/2024 | Tipologia campione | semilavorato |
| Data analisi | 06/02/2024 | varietà | NA |
| Codice riferimento interno | CRY0502.1 | N. Cartellino | NA |
| Metodica analitica | HPLC - HS - Rev.2 | Campionamento | a cura del cliente |
| Lotto | | | |

Note

| Parametro | % p/p | Metodo |
|-------------------|--------------|------------------|
| CBDV | 0.02% | HPLC-UV |
| CBDA | 0.02% | HPLC-UV |
| CBGA | <0.01% | HPLC-UV |
| CBG | 6.60% | HPLC-UV |
| CBD | 5.33% | HPLC-UV |
| THCV | <0.01% | HPLC-UV |
| CBN | 2.49% | HPLC-UV |
| d9_THC | 0.11% | HPLC-UV |
| d8_THC | <0.01% | HPLC-UV |
| CBC | 0.34% | HPLC-UV |
| THCA | <0.01% | HPLC-UV |
| CBD TOTALE | 5.35% | CALCOLATO |
| CBG TOTALE | 6.60% | CALCOLATO |
| THC TOTALE | 0.11% | CALCOLATO |

CAMPIONE ANALIZZATO: L0124032(3.00gr)



Pineto

26/02/2024