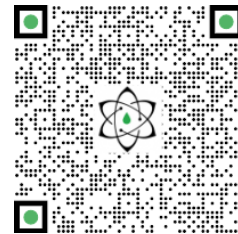




TECHNICAL REPORT

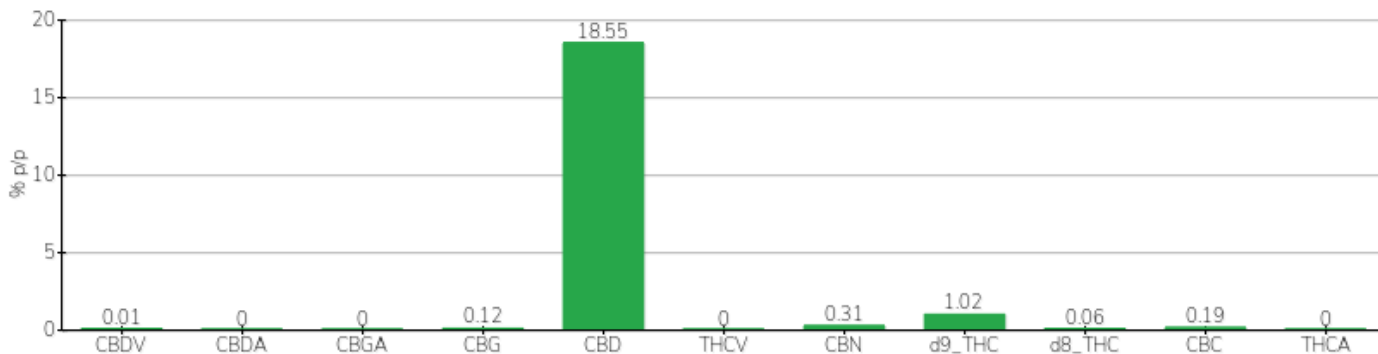


Committente	VALTELLINAMED ITALIA SRL	Etichetta	VALTELLINA TETRA 20:1
Data accettazione	05/11/2024	Tipologia campione	semilavorato
Data analisi	07/11/2024	varietà	NA
Codice riferimento interno	VAT0511.7	N. Cartellino	NA
Metodica analitica	HPLC - HS - Rev.2	Campionamento	a cura del cliente
Lotto	104R6TV2		

Note

Parametro	% p/p	Metodo
CBDV	<0.01%	HPLC-UV
CBDA	<0.01%	HPLC-UV
CBGA	<0.01%	HPLC-UV
CBG	0.12%	HPLC-UV
CBD	18.55%	HPLC-UV
THCV	<0.01%	HPLC-UV
CBN	0.31%	HPLC-UV
d9_THC	1.02%	HPLC-UV
d8_THC	0.06%	HPLC-UV
CBC	0.19%	HPLC-UV
THCA	<0.01%	HPLC-UV
CBD TOTALE	18.55%	CALCOLATO
CBG TOTALE	0.12%	CALCOLATO
THC TOTALE	1.02%	CALCOLATO

CAMPIONE ANALIZZATO: NA(0.00gr)



Pineto

22/11/2024